
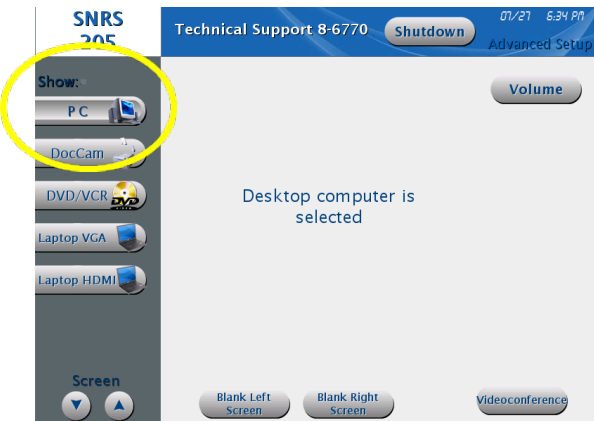
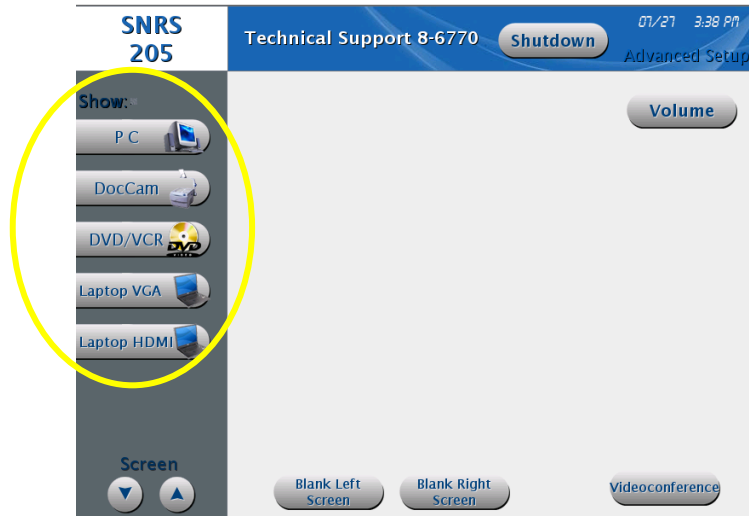


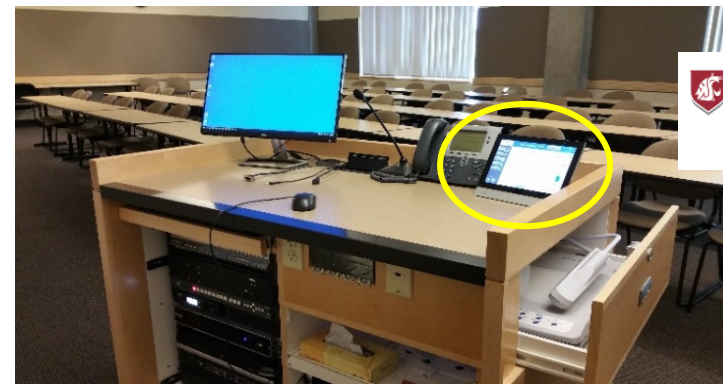
Classroom Technology Guide-Spokane Campus

Rooms on the Spokane campus are controlled by a panel. Press  to turn on the equipment in the room.

Choose the source on the panel for what you want displayed. Only one source can be displayed at a time.



PC-If the computer isn't logged in please click "Connect" on the computer screen. If the computer is locked, restart the computer. The keyboard and mouse may be in a pull out table in the podium.



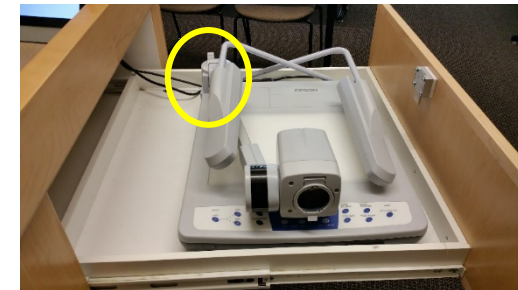
Need help?
Call 86770

Doc Cam-may be in the podium or on the ceiling

Controls are on the camera



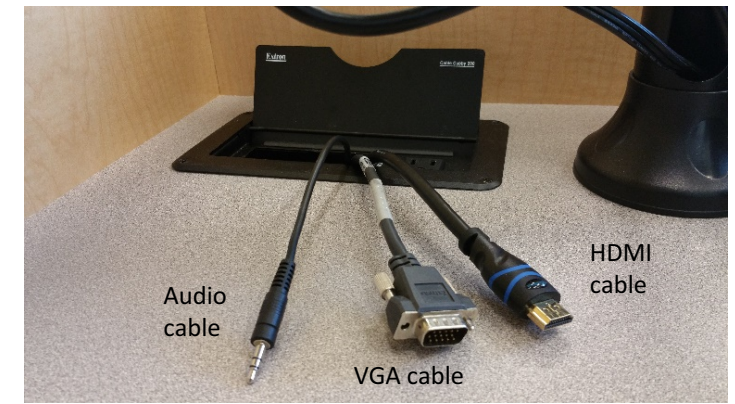
Controls are on the camera; Push the button in back to release lamp arms and camera



Controls are on the panel for the overhead camera



Laptop VGA or Laptop HDMI-match the cable connected to your device.



Wireless presentation is also an option to connect devices. Call 86770 for assistance.



Volume controls are for the source selected (No audio? Check device audio settings; cables)



Have other questions?
For Technology please contact Classroom Support at 86770 or (509)368-6770
For Room Scheduling please contact Student Affairs at 87536 or (509) 358-7536
For Security issues (please call 911 from the room phone in an emergency) please call 87995 or (509) 358-7995